



# MONTHLY MEMBERSHIP PROGRESS REPORT

District 120

Results as of: 06/30/2018

GMT: ANTTI FORSELL

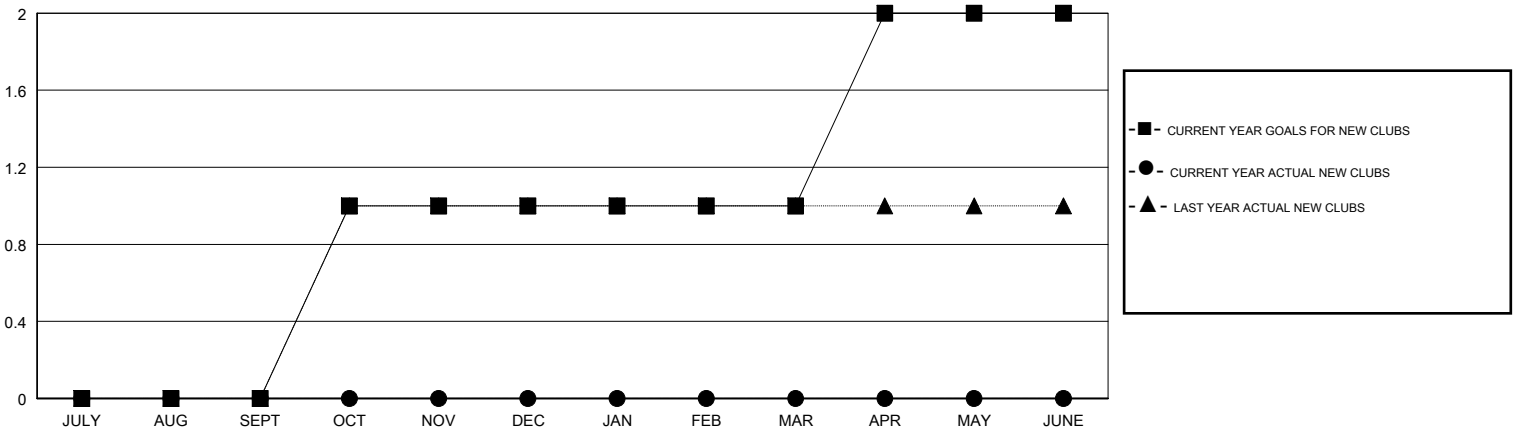
LOCATION ESTONIA

GMT CA

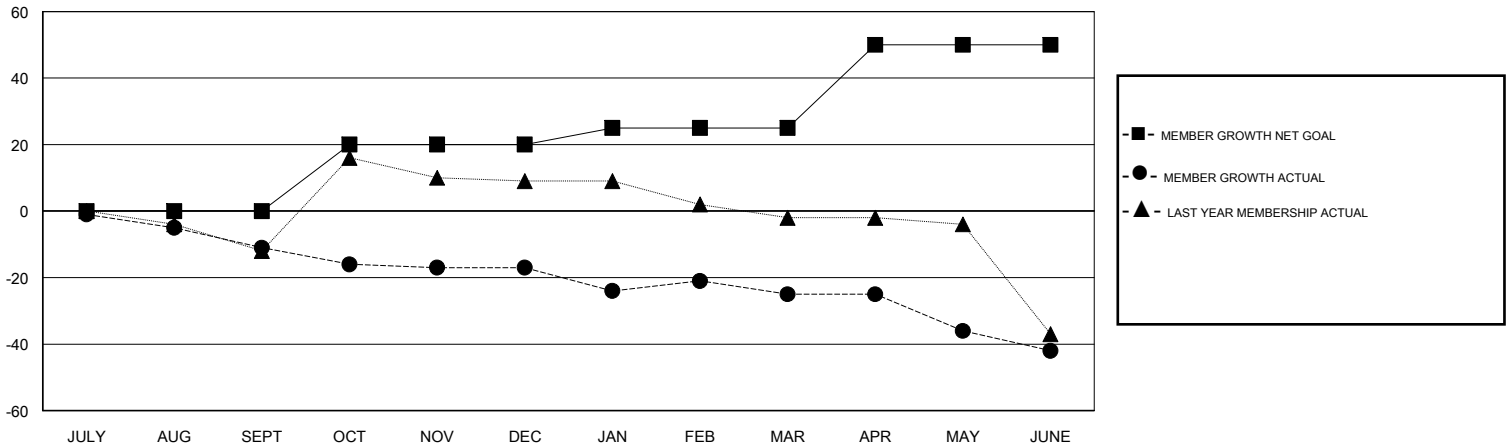
Clubs			
RESULTS FOR 2017-2018			
QUARTER	NEW CLUB GOAL	NEW CLUBS	DROPPED CLUBS
JULY/AUG/SEPT	0	0	2
OCT/NOV/DEC	1	0	0
JAN/FEB/MAR	0	0	0
APR/MAY/JUNE	1	0	0

Members			
RESULTS FOR 2017-2018			
QUARTER	MEMBER GROWTH NET GOAL	MEMBER GROWTH ACTUAL	DROPPED MEMBERS ACTUAL (including transfers)
JULY/AUG/SEPT	0	5	16
OCT/NOV/DEC	20	10	16
JAN/FEB/MAR	5	16	24
APR/MAY/JUNE	25	17	34

GOALS AND ACTUAL NEW CLUBS CUMULATIVE



GOALS AND ACTUAL MEMBERS CUMULATIVE



DROPPED CLUBS: 2	33 CLUBS OF 61 ADDED 1 OR MORE NEW MEMBERS	<u>GENDER DISTRIBUTION</u>	
DROPPED MEMBERS		MALE	847 (71.42%)
DECEASED	9	FEMALE	339 (28.58%)
CLUB CANCELLED	0	Women Percentage Fiscal Year Goal: 31%	
OTHER	81	TOTAL FAMILY UNIT MEMBERS	
TOTAL	90	FAMILY MEMBERS PAYING HALF DUES	
		TOTAL	
		TOTAL	

[CLICK HERE FOR CUMULATIVE MEMBERSHIP DATA](#)